



Systems Engineering Professional (SEP) Certification Program

April 8, 2026

Dr. Jen Giang

Mission and Vision

VISION: To unite and advance the global systems community

MISSION: INCOSE fosters systems engineering knowledge exchange, application, education, and research. We are dedicated to being the world's trusted authority and forum for the practice, science, and art of systems engineering.

INCOSE SEP Program Purpose and Benefits

The INCOSE SEP Program offers independent assessment of system engineering professionals benefiting:

Systems Engineering Community:

- Creates the standard to identify and develop systems engineering professionals.
- Establishes a formal, recognized body of knowledge for the systems engineering community.

Systems Engineering Professionals:

- Provides a portable standard of recognition for attainment of knowledge, education, and experience.
- Serves as a mechanism for continued professional development through recertification requirements.

Organizations/Institutions:

- Offers a universal, industry-approved measure of a professional's knowledge –achieved through the independent evaluation of relevant tasks, projects, and programs.

Employer Job Postings ask for SEP



Booz | Allen | Hamilton*



Universities have Certification Agreements



Other Certification Agreements

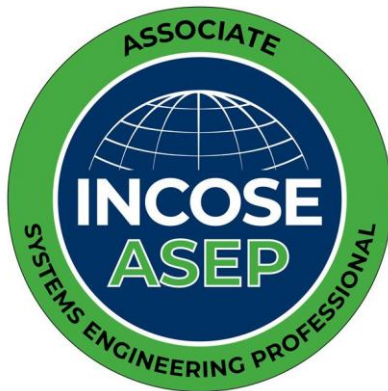
INCOSE and the following organizations have signed agreements for existing certifications to meet some of the SEP requirements or offering a discount on application fees



INCOSE Certification

The Systems Engineering Professional (SEP) Certification Program offers internationally recognized systems engineering qualification at three levels, confirming an individual's competency through demonstrated knowledge, education, and experience.

For people at the beginning of their career as a systems engineer. The ASEP has “book knowledge” but not yet significant experience as a systems engineer.



For practicing systems engineers with more than five years of systems engineering professional work experience.

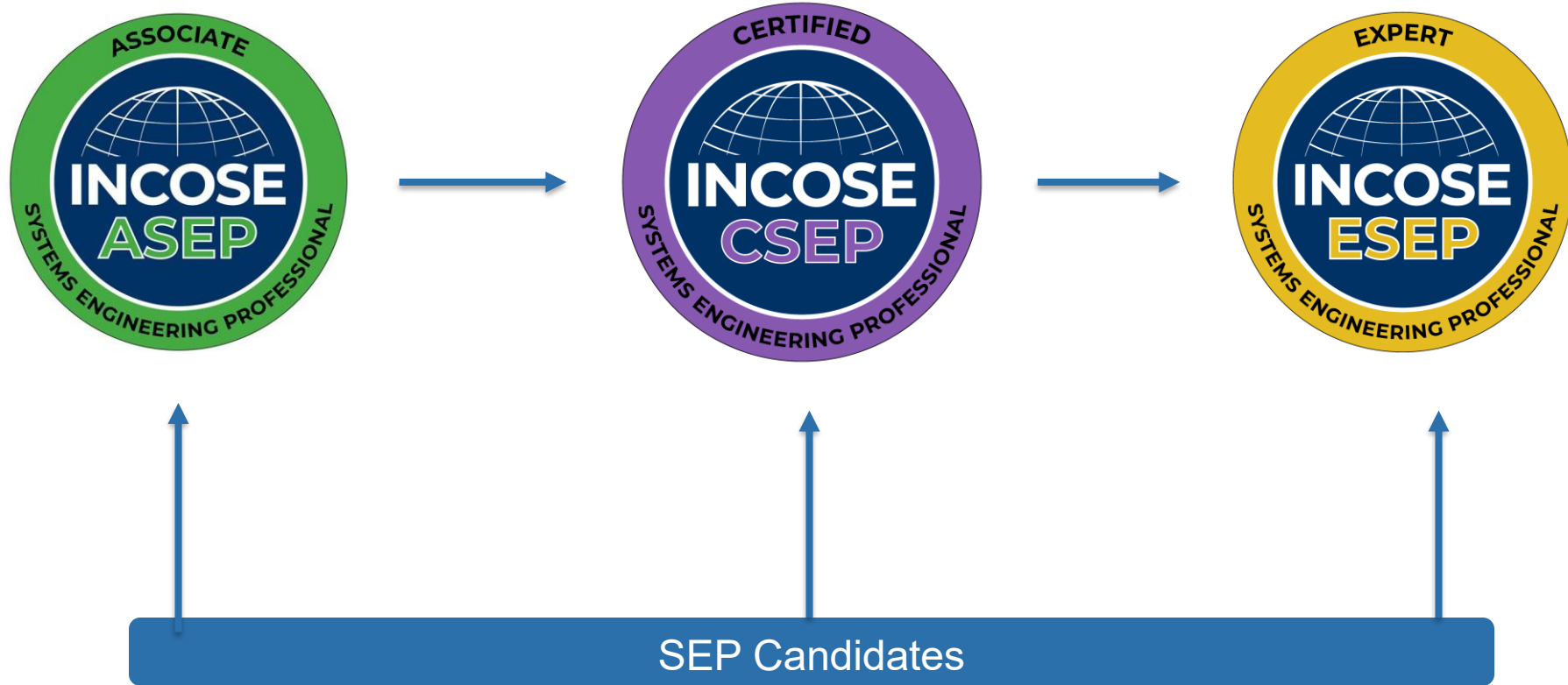


For systems engineering leaders with recognized systems accomplishments and who have many years of systems engineering professional work experience.



Different Requirements for Each Level

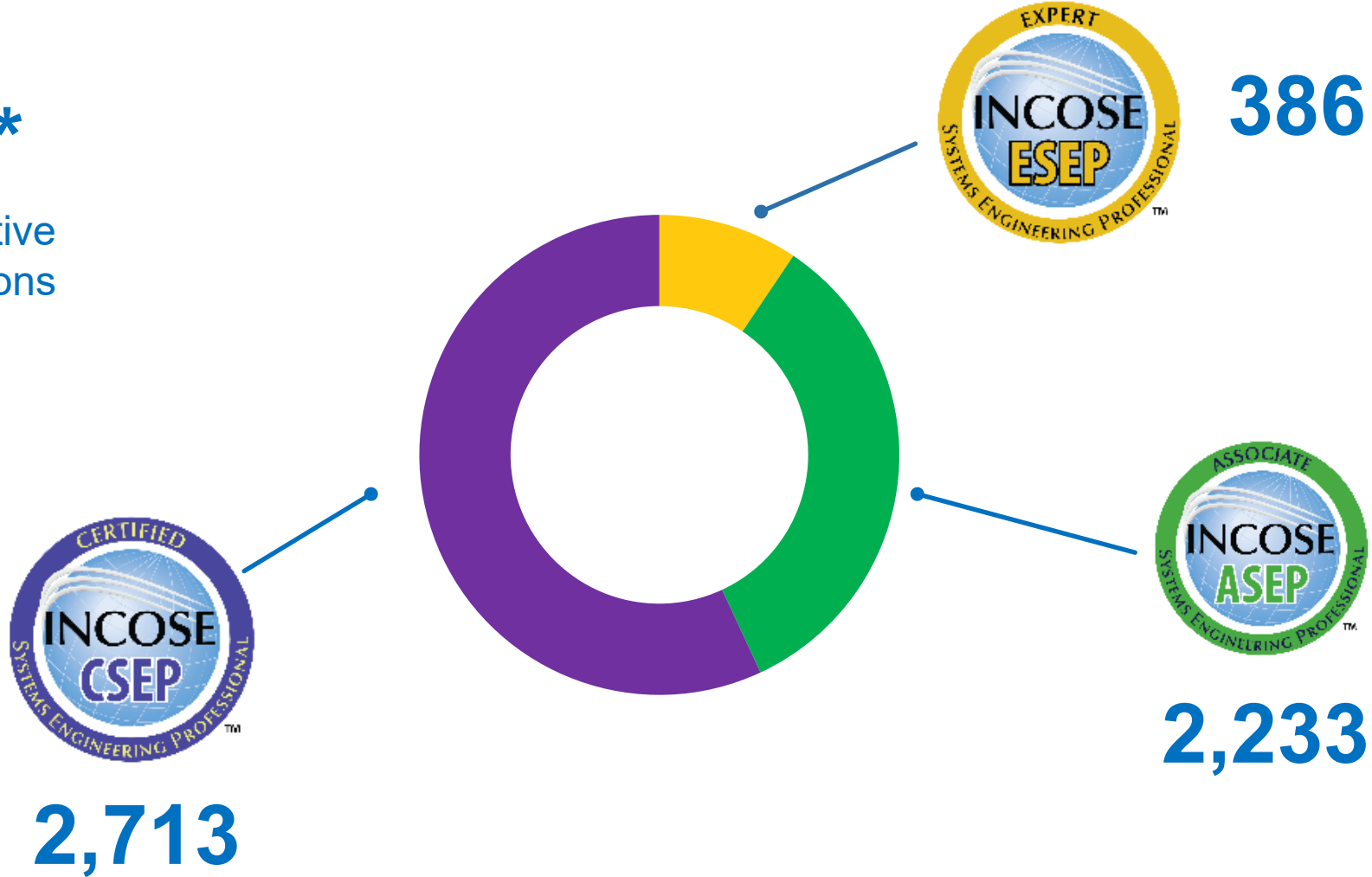
You can enter at whatever SEP level is appropriate and transition between levels when ready



INCOSE Certification

5,332*

Current Active
Certifications



Associate Systems Engineering Professional



- If you have just started practicing –or want to start practicing –systems engineering, then ASEP is for you. This certification is for people at the beginning of their career as a systems engineer. The ASEP has “book knowledge” but not yet significant experience as a systems engineer.
 - Knowledge verification required
 - Suitable for students, early career professional, project and program managers, and all those who “speak systems engineering”

Associate Systems Engineering Professional



- If you are a practicing Systems Engineer with more than five years of systems engineering professional work experience, then CSEP is for you.
 - Knowledge verification required
 - At least five years of experience required
 - At least five years of experience verification required
 - Suitable for independent practitioners, which includes most systems

Associate Systems Engineering Professional



- If you are a systems engineering leader with recognized systems accomplishments and have many years of systems engineering professional work experience, then ESEP is for you.
 - At least 20 years of experience required
 - At least 10 years of experience verification required
 - Suitable for technical leaders who have “moved the needle” in applying systems engineering within a community, which may include their employer, client, or a professional society. Few individuals meet the ESEP requirements, even if they have been practicing systems engineering for a long time.

Knowledge Verified by Exam or Coursework



- **Knowledge Requirements**
 - Based on INCOSE Systems Engineering Handbook v5
 - Required for ASEP and CSEP certification
 - Can be verified through knowledge exam or university coursework
- **Exam is**
 - 100 multiple-choice questions (potentially 120 questions)
 - 100 minutes for exam
 - Proctored by video through computer or in-person at INCOSE events
 - Allowed to be attempted up to 3 times per 12 months
- **Academic Equivalency allows course assessments to meet knowledge requirement**
 - Must score highly in pre-approved university course
 - Course may be taught in any language and may use a wide variety of assessment methods
 - Course must use INCOSE SE Handbook

INCOSE SEP Exam Prep Options

- INCOSE SEP Group Study Starting April 9/10 (INCOSE Los Angeles and San Diego Chapters) – online independent 10-week study group - \$125 with potential 80% refund (participating and proof of taking the exam)
- SE Scholar – Online Prep Course - <https://se-scholar.com/>
- Certification Training International - CTI currently is offering online course offerings - <https://certificationtraining-int.com/incose-sep-exam-prep-course/>
- Our chapter has two SEP mentors:
 - Ann Hodges ann.hodges@incose.net
 - Heidi Hahn drsquirt@outlook.com

Experience Documented By Area

Candidate must provide a map of their experience

CSEP: 1 Year of Experience in 3 of the areas

ESEP: 2 Years of Experience in 6 of the areas



- Requirements Engineering
- System and Decision Analysis
- Architecture / Design Development
- System Integration
- Verification and Validation
- System Operation and Maintenance
- Technical Planning
- Technical Monitoring and Control
- Acquisition and Supply
- Information Management and Configuration Control
- Risk and Opportunity Management
- Lifecycle Process Definition and Management
- Specialty Engineering
- Organizational Project Enabling Activities
- Other



Certification & Reference Experience Requirements

All applications must use INCOSE Forms



SYSTEMS ENGINEERING EXPERIENCE

- CSEP has ≥ 5 years of professional-level SE experience
- ESEP has ≥ 20 years of professional-level SE experience

EXPERIENCE CONFIRMATION

- Recommendations from at least 3 colleagues / peers / managers
- References must confirm SE experience claims
- References must be knowledgeable of systems engineering but need not be SE's



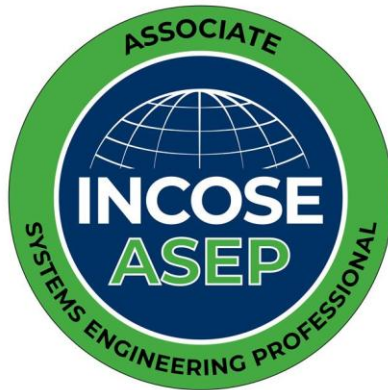
ESEP Minimum of 5 Year of Professional Development

- Product Development Leadership / Technical Society Leadership / Advanced Academics
- ESEP Candidates participate in audio interview to confirm SE leadership

ASEP and CSEP Renewal

Certification is valid for defined time period and all levels must maintain INCOSE Individual Membership

5 Years



3 Years



Indefinite



CERTIFICATION RENEWAL REQUIRES CONTINUING EDUCATION

- Minimum of 120 Professional Development Units (PDUs)
 - Technical Society participation
 - SE course work and publications
 - SE job functions beyond daily work

SEP Events

If you would like us to host a study group or exam for your company/group, please let the Enchantment Leaders know!

Enchantment Chapter SEP Events

- Sierra Nevada Corporation SEP Study Group (Q1 2026)
- Hosted two SEP Exams at Sierra Nevada Corporation (March 27, 2026)
- Hosting SEP Exam at Los Alamos with a happy hour to follow (May 21, 2026)
- Hosting SEP Exam at Sierra Nevada Corporation (August 2026)

Other INCOSE SEP Events

- Dassault CATIA User Symposium Americas (CUSA) – Free Exam w/ event registration - <https://reg.cusa.events.3ds.com/flow/3ds/cusa26/landing/page/home>
- INCOSE SEP Group Study Starting April 9/10 (INCOSE Los Angeles and San Diego Chapters) – online independent 10-week study group - \$125 with potential 80% refund (participating and proof of taking the exam)

Contact Us



International Council on Systems Engineering
A better world through a systems approach

For more certification information visit www.incose.org/certification

Or contact certification@incose.net

For more information contact info@incose.net
www.incose.org



@INCOSE



@incose_org



@incose_org



INCOSE

INCOSE Americas Sector and You

Renee Steinwand

Americas Sector Director

Agenda

- Introduction
- Membership is a priority
- INCOSE Sector Info and Organization
- Where do you fit in at INCOSE?

Introduction



Renee Steinwand, Americas Sector Director

Joined INCOSE in 2006 – motivated to become certified, based on my background and Aerospace work at Booz Allen Hamilton. Certified in 2010 as CSEP after completing Prep Class, ESEP in 2022

Colorado Front Range Chapter – webmaster, vice president, president, social director, etc.

Western Region Assistant Director

Americas Sector Director – 2 terms - Jan 2022 to Jan 2028

Reside in Colorado Springs, but moving to Idaho in the next 6 months

Also participate in Strategic Events Oversight Committee, Chapter Advisory Committee, Western States Regional Conference

Personal interests – reading, yoga, cycling, skiing, hiking, camping, cooking

Our #1 Priority

INCOSE's Business: MEMBERSHIP

YOU are OUR Priority!

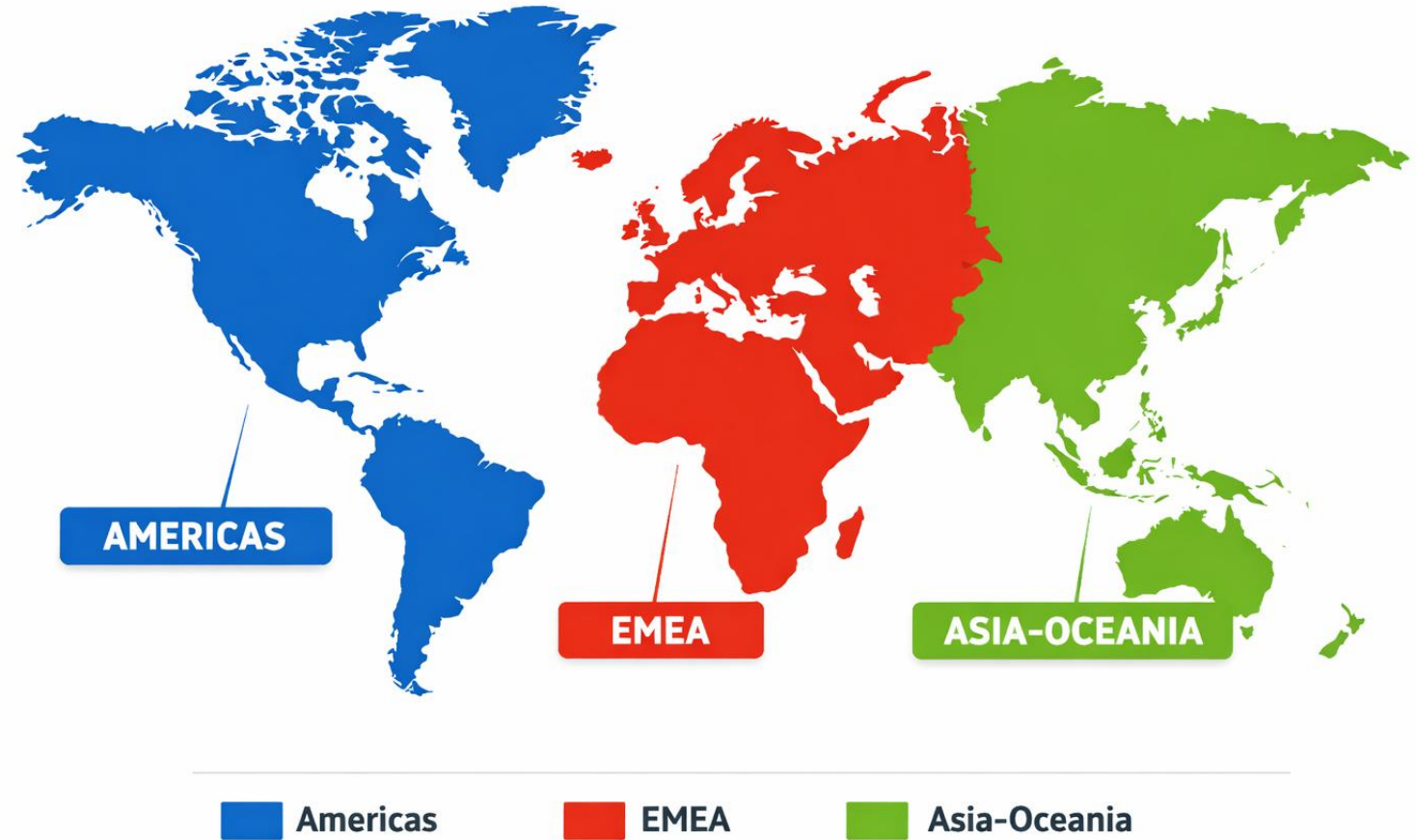


We are a professional membership association. Attraction, engagement, and retention are vital.

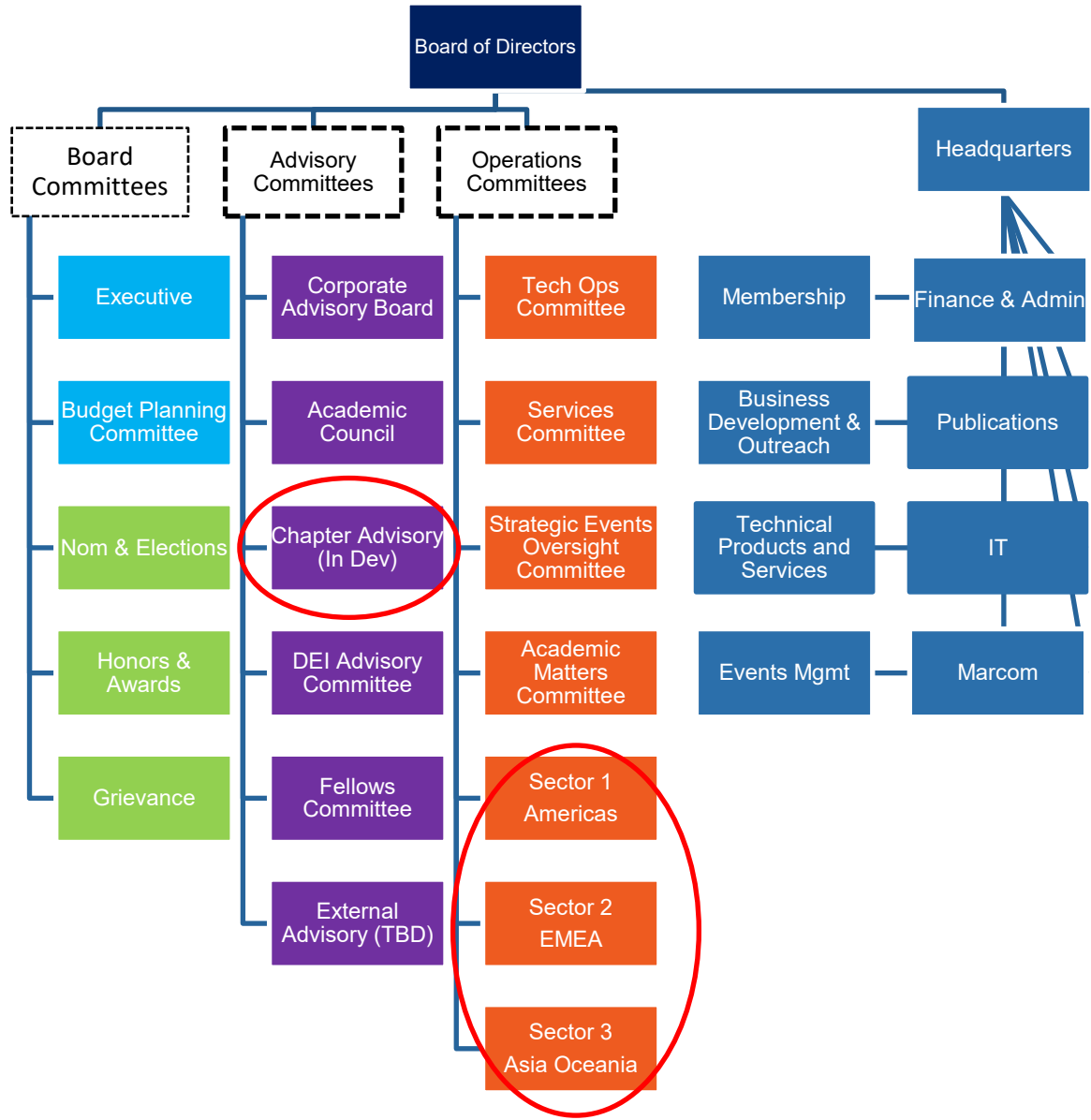
- ✓ Individual members
- ✓ Local companies with CAB member potential

INCOSE Sector Info

- 3 Sectors, each with a Sector Director (point of contact)
- Americas Sector – 41 chapters in North and South America
 - Small, medium, large chapters
 - Varying degrees of activities and involvement
- INCOSE Connect, INCOSE website, Chapter websites
- Dedicated staff helps with management



Our Organization



Where do you fit as a member?

What are you looking for?

Get INVOLVED!

The value of your INCOSE membership extends far beyond technical publications—it is your connection to the premier global network of systems engineering professionals. Building relationships is crucial for career growth, mentoring, and collaborative innovation.



Certification



Jen already addressed the process and value of certification

Networking - Events

International Workshop (IW) Jan 2026 , Los Angeles

International Symposium (IS) Jun 2026, Yokohama, Japan



Regional Events – Sector 1

- Conference on Systems Engineering Research (CSER) (Apr)
- Healthcare Working Group Conference (Apr)
- Huntsville MBSE Symposium (Jun)
- Western States Regional Conference (Sep)
- New England Workshop (Fall)
- Los Angeles/San Diego Workshop (Dec)

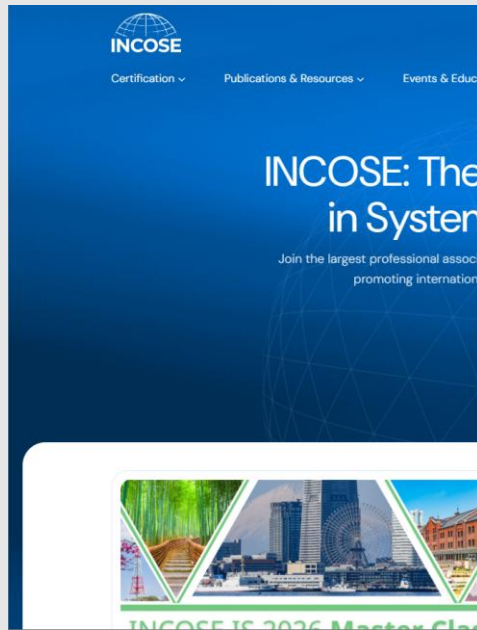
Chapter Events

- Conference on Systems Engineering Research (CSER) (Apr)
- Healthcare Working Group Conference (Apr)
- Huntsville MBSE Symposium (Jun)
- Western States Regional Conference (Sep)
- New England Workshop (Fall)
- Los Angeles/San Diego Workshop (Dec)

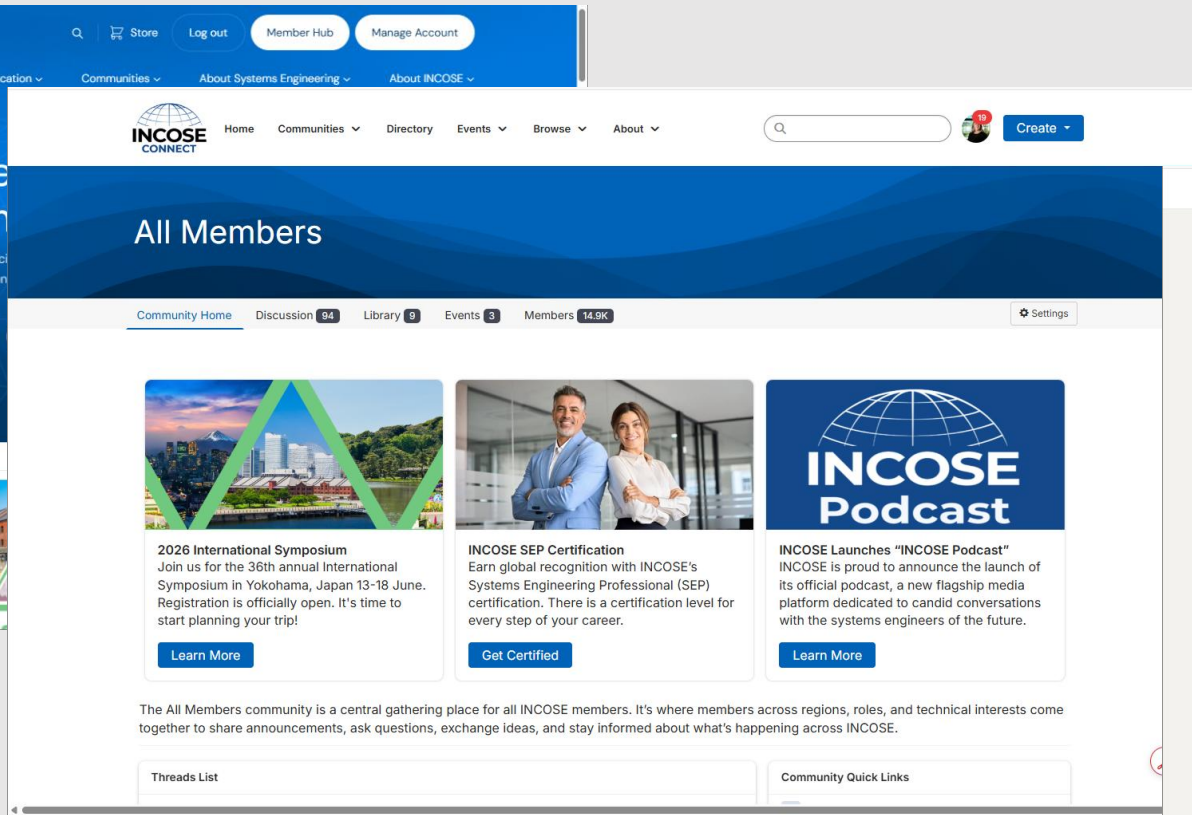
Information Resources



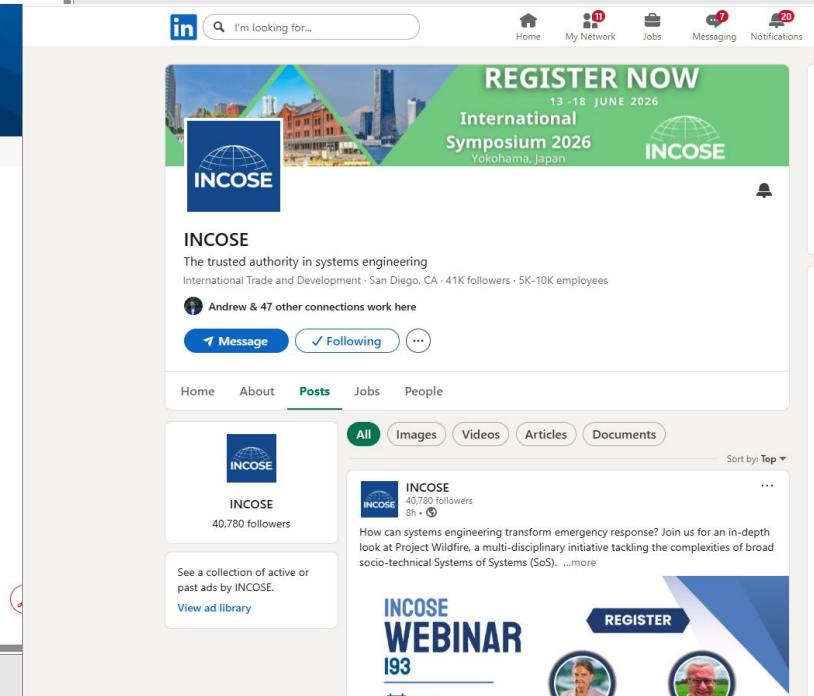
INCOSE website



INCOSE Connect (member engagement platform)



INCOSE LinkedIn



Career Development Resources

- Working Groups – 54 Systems Engineering Working Groups
 - Bring value to other INCOSE stakeholders in your interest area
 - Build expertise and contacts
 - Help develop and review international standards
 - Share information across Working Groups
 - Create products to advance the state, art and practice of systems engineering
- Webinars – Increase in number of available topics and formats (see events calendar)
- SE Lab – Lab Demo Days, licenses for SE Tools,
- Resume Development – Workshops and virtual career fairs
- Mentoring - guided learning, knowledge sharing, and career development. Through mentoring, participants gain practical insights, professional support, and connections within the global systems engineering community.
- Technical Leadership Institute - global learning network of INCOSE members committed to improving technical leadership skills to better address today's product, enterprise, and societal complexity.
- Career Center - dedicated online platform designed to connect talented systems engineering professionals with exciting career opportunities posted by leading organizations worldwide.



Personal Development

We want INCOSE to play an important part in members' lives by contributing to their continuous personal and professional development and not just offering transactional services that meet a short-term need.



Other Areas of Interest

Members Newsletter

Technical Publications

- [SE Handbook](#)
- [SE Competencies](#)

Annual Report

Questions?



INCOSE Connect

- All-member engagement platform organized through “communities”
- Each chapter will be provided with its own community
- Other communities will be focus on SE topical, event information, and general discussions



***If you do not have access to CONNECT, please fill out the INCOSE Chapter Officer Update Form.**